

Stone Walls above High Mount

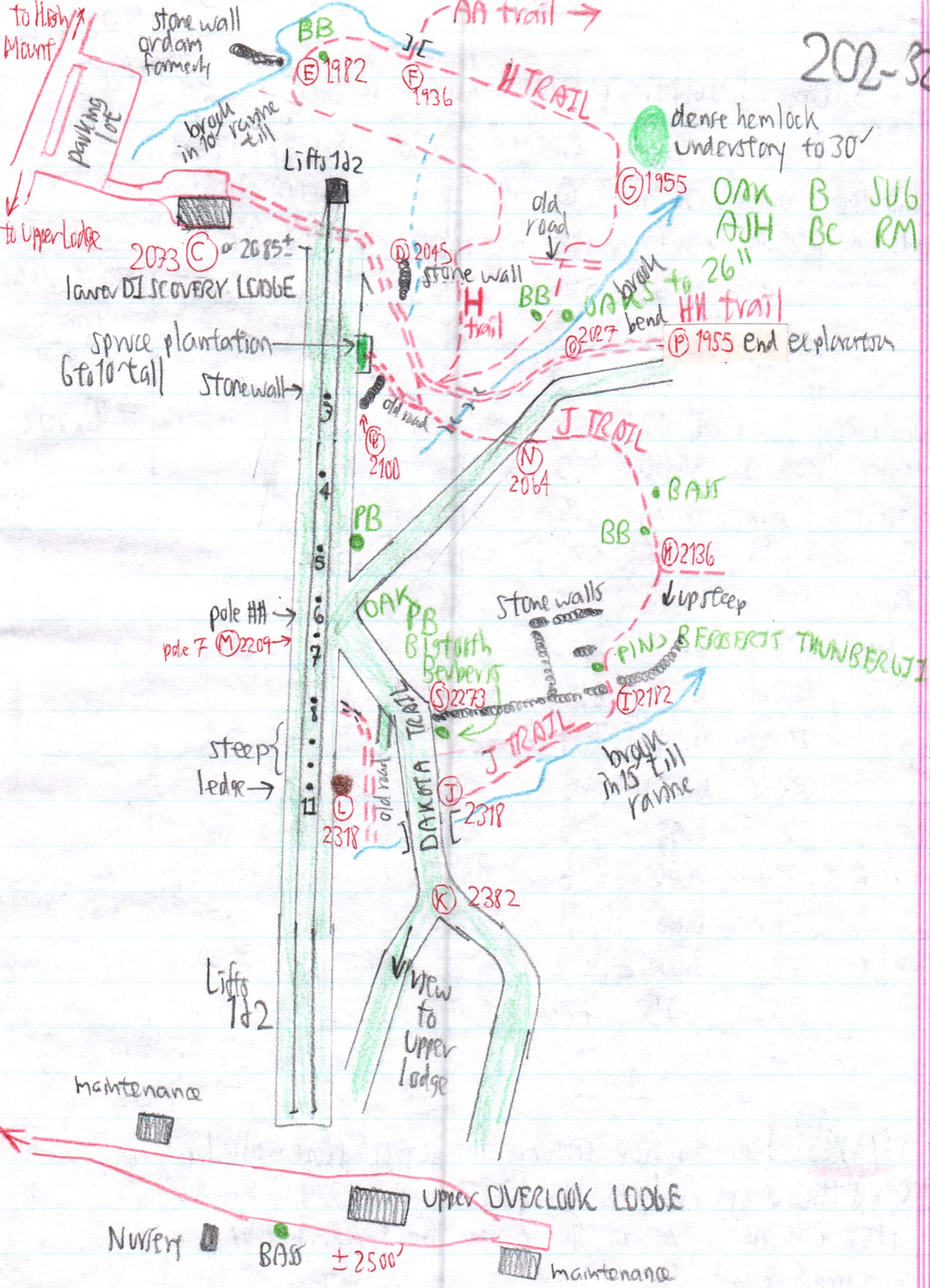
202-32A

5/22/198

Site	p	Δp	Δe	e calc	e map	time	r
(A) Fleischmann's Valkyrian	30-10	0.00	0	—	1500	12:10	
(B) High Mount depot	29-68	0.42	382	1882	1890	12:15	$\frac{2500-1500}{30.10-29.00}$
(C) lower, Discovery, Lodge	29.47	0.63	573	2073	± 2100	12:20	
(D) stone wall	29.56	0.60	545	2045			$= \frac{1000}{1.100}$
(E) stone wall-dam	29.57	0.53	482	1982			$= 0.909$
(F) Junc. H & AA trails	29-62	0.48	436	1936			
(G) hemlock understory	29-60	0.50	455	1955			
(H) Junction on J trail	29-40	0.70	636	2136			
(I) stone wall	29.35	0.75	682	2182			
(J) Dakota Sky Run	29-20	0.90	818	2318			
(K) view of upper lodge	29-13	0.97	882	2382			
(L) ledge	29-20	0.90	818	2318			
(M) pole 7	29-32	0.78	709	2209			
(N) J trail.	29-48	0.62	564	2064			
(O) HH trail bend	29-52	0.58	527	2027			
(P) HH trail end hike	29-60	0.50	455	1955			
(Q) stone wall	29.44	0.66	600	2100		2:30	
(R) Upper Overlook Lodge	29.00	1.10	1000	—	2500	3:00	
(S) stone wall	29-25	0.85	773	2272			

DAKS seem to stop around the upper stone wall limit at 2273', & thus seem related to former pastures. There are no oaks at (K) or at the Upper Lodge. Next time, trace the OAK upper limit.

202-32B



To High Mount

stone wall and dam

BB

(E) 1982

JE

(E) 1936

AA TRAIL

H TRAIL

dense hemlock understory to 30'

OAK B SUB
AJH BC RM

Lifts 1&2

to Upper Lodge

2073 (C) or 2085+
lower DISCOVERY LODGE

spruce plantation
6 to 10 tall
stone wall

(D) 2045

stone wall

old road

(G) 1955

OAK bend to 26"

H TRAIL

(P) 1955 end exploration

old road

(P) 2100

PB

J TRAIL

(N) 2064

BAS

BB

(P) 2136

up steep

pole #7 (M) 2209

OAK PB
Bistuth
Beveris
(S) 2273

stone walls

PINUS BERBERIS THUNBERGII

(I) 2112

J TRAIL

bridge in to ravine fill

steep ledge

(L) 2318

(J) 2318

(K) 2382

Lifts 1&2

new to Upper Lodge

maintenance

Upper OVERLOOK LODGE

NW 1/4

BAS ± 2500'

maintenance